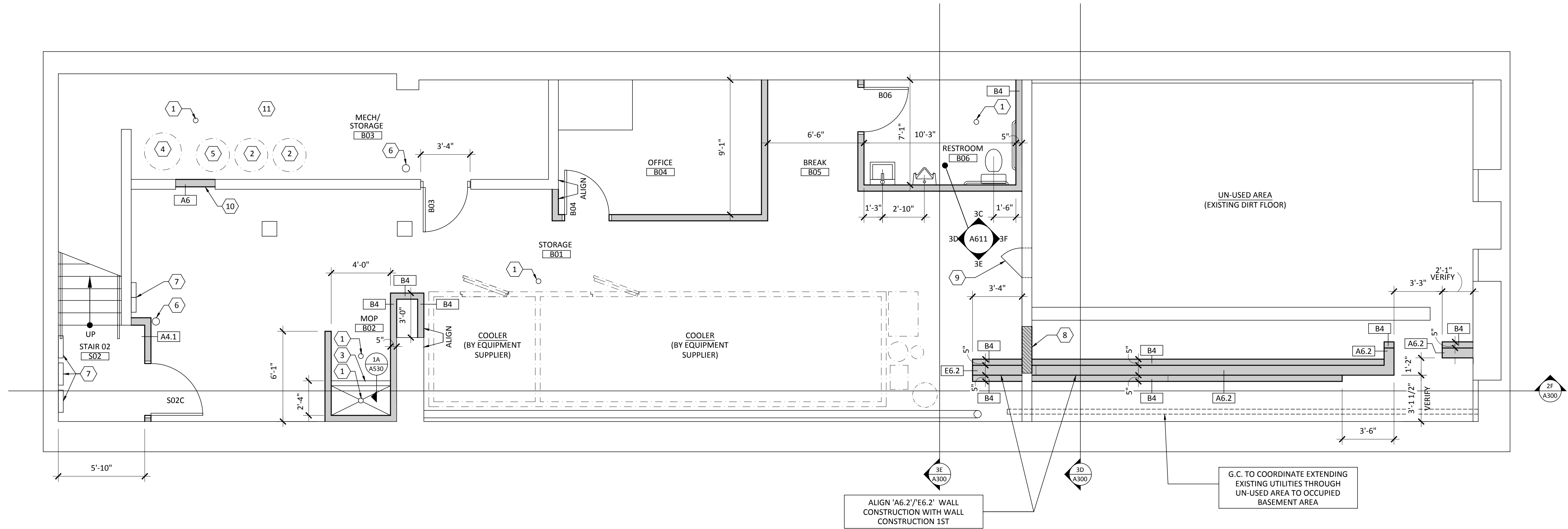


I hereby certify that this plan was prepared by me or under my direct supervision and I am a duly licensed architect under the laws of the State of Minnesota.
 Nicole Washburn, AIA, LEED AP
 Reg. No. 46516
 Exp. 8/18/2015



2F
 A200
BASEMENT PLAN
 SCALE: 1/4" = 1'-0"

FLOOR PLAN LEGEND:

- EXISTING WALL CONSTRUCTION (TO REMAIN)
- NEW WALL CONSTRUCTION

GENERAL FLOOR PLAN NOTES:

1. MECHANICAL, ELECTRICAL, PLUMBING & FIRE PROTECTION DESIGN BUILD (COORDINATE AS REQUIRED).
2. TYPICAL WALL ASSEMBLY: 'A4' (UNLESS NOTED OTHERWISE).
3. DIMENSIONS TO FINISH FACE (UNLESS NOTED OTHERWISE).
4. COORDINATE FLOOR PENETRATIONS WITH EQUIPMENT SUPPLIER AND M.E.P. CONTRACTORS.
5. PROVIDE FIRE STOPPING AS REQUIRED AT PENETRATIONS AND JOINTS AT RATED WALLS & FLOORS.
6. PROVIDE IN-WALL BLOCKING AS REQ'D FOR EQUIPMENT, ACCESSORIES, SHELVING & FIXTURES.
7. INSTALL PROTECTION AT EXPOSED, OVERHEAD PIPES AS REQUIRED BY CODE.
8. INSTALL PHONE PANEL, SECURITY SYSTEM CONTROL PANEL, AND OUTDOOR LIGHT/SIGNAGE TIMER IN MECH ROOM (COORDINATE AS REQUIRED WITH ELECTRICAL).
9. INSTALL ALUMINUM CORNER GUARDS AT HIGH TRAFFIC AREAS (VERIFY SIZE AND LOCATIONS WITH OWNER).

BASEMENT PLAN KEYNOTES

- 1 FLOOR DRAIN (COORDINATE LOCATION WITH PLUMBING & EQUIPMENT DRAWINGS AS REQUIRED)
- 2 WATER HEATER (VERIFY LOCATION & QUANTITY WITH MECHANICAL)
- 3 MOP BASIN, SLOPED TO DRAIN WITH <VNL SHT-1> FINISH
- 4 GREASE TANK (CONNECT TO EXTERIOR HOOK-UP AS REQUIRED)
- 5 EQUIPMENT (BY EQUIPMENT SUPPLIER - COORDINATE AS REQUIRED)
- 6 FIRE EXTINGUISHER WITH WALL BRACKET (SIZE F.E. AS REQUIRED BY CODE)
- 7 EXISTING ELECTRICAL EQUIPMENT - RELOCATE AS REQUIRED (COORDINATE WITH ELECTRICAL)
- 8 CMU INFILL EXISTING MASONRY OPENING
- 9 <ACC PNL-20>, INSTALL 24" ABOVE FLOOR
- 10 INSTALL <WD SHTG-25> WITH <EPXY PT-1> FINISH, BOTH SIDES
- 11 IN MECH ROOM, INSTALL <WD SHTG-25> WITH <EPXY PT-1> FINISH AS REQUIRED FOR UTILITY INSTALLATION

REFLECTED CEILING PLAN LEGEND

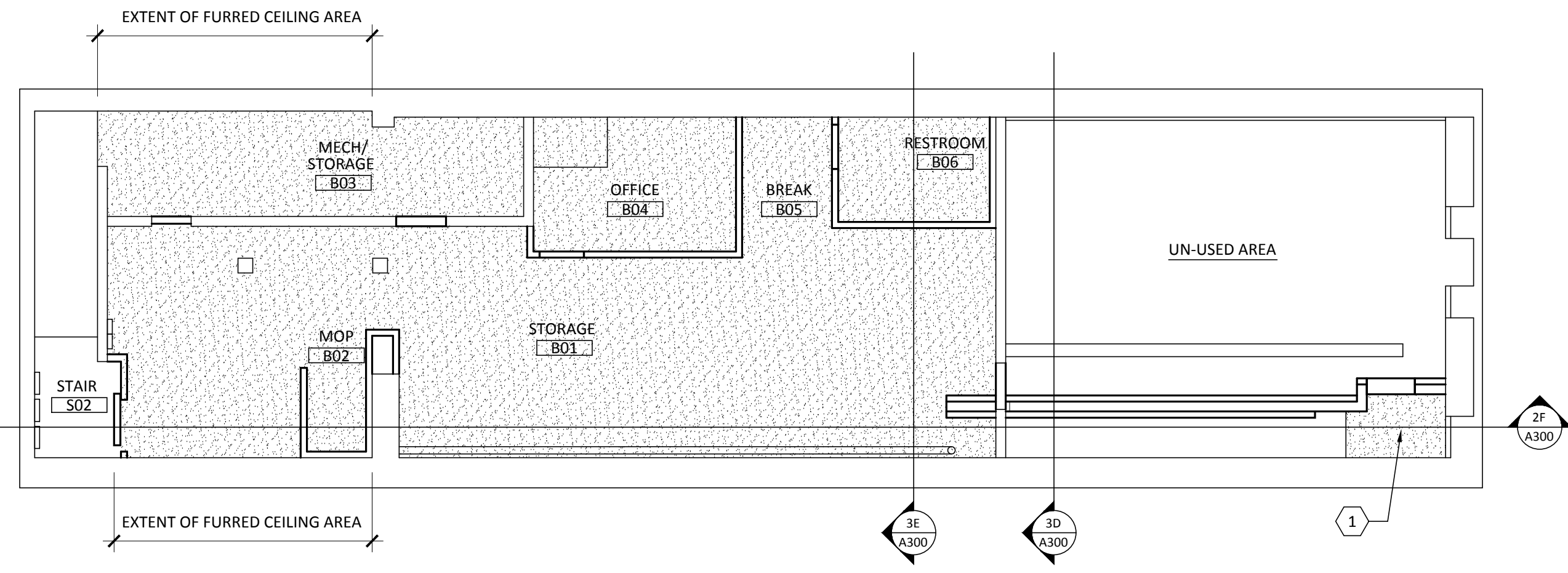
- PAINTED GYPSUM BOARD

REFLECTED CEILING PLAN GENERAL NOTES

1. TYPICAL EXISTING BASEMENT CEILING HEIGHT 8'-3" AT EXISTING CEILING JOISTS (UNLESS NOTED OTHERWISE). FIELD VERIFY CEILING HEIGHT.
2. MECHANICAL, ELECTRICAL, PLUMBING & FIRE PROTECTION DESIGN BUILD (COORDINATE AS REQUIRED).
3. PROVIDE PROTECTION AT EXPOSED OVERHEAD DUCTS, CONDUIT AND PIPES AT CEILINGS AS REQUIRED BY CITY CODE AND DEPARTMENTS.
4. AT CONCRETE/CLAY TILE CEILING AREAS INSTALL FURRED CEILING TO MATCH CEILING HEIGHT AT WOOD JOISTS

REFLECTED CEILING PLAN KEYNOTES

- 1 'F1.2' FLOOR ASSEMBLY AT VESTIBULE ABOVE



1F
 A200
BASEMENT REFLECTED CEILING PLAN
 SCALE: 1/8" = 1'-0"

No.	Description	Date