

713 W St Germain

St. Cloud, MN

FOR LEASE



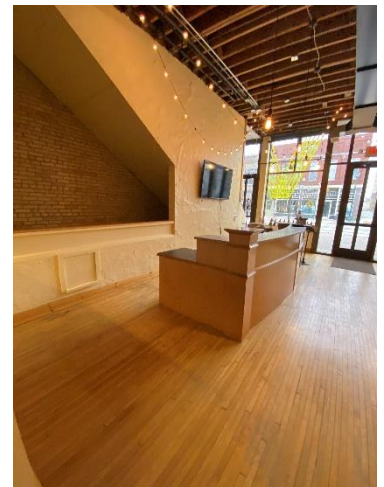
Property Information

- Built in 1910 constructed of 100% brick
- Completely renovated property enhancing the historical features
- Electric, plumbing, HVAC systems and duct work, roof, wood floors, masonry were all replaced, repaired or re-finished during full restoration of the property
- Wood floors and brick walls create a very unique atmosphere
- Very attractive storefront with large windows
- 2700 SF Main floor with full basement shared between tenants for storage
- Currently used as marketing offices. Main floor available for lease, Upper level is leased to Gaslight Creative.
- Bonus room with wood cabinets/lockers and separate utility room
- Break Room/Kitchenette
- Numerous Private rooms or offices with very unique accents
- Separate Entrance for Upper level in front and back.
- Reception desk, large full height cabinet and counter height cabinet available for your use.

Main Floor Available For Lease Historically Renovated Building

2700 SF Available
\$11.00 PSF Gross
Plus 1/2 utilities

Gaslight Creative marketing firm leases the upper level.
Plus there is a full lower level for storage which can be shared with both tenants.



For more information contact:

Sheila DeVine

320.492.3230

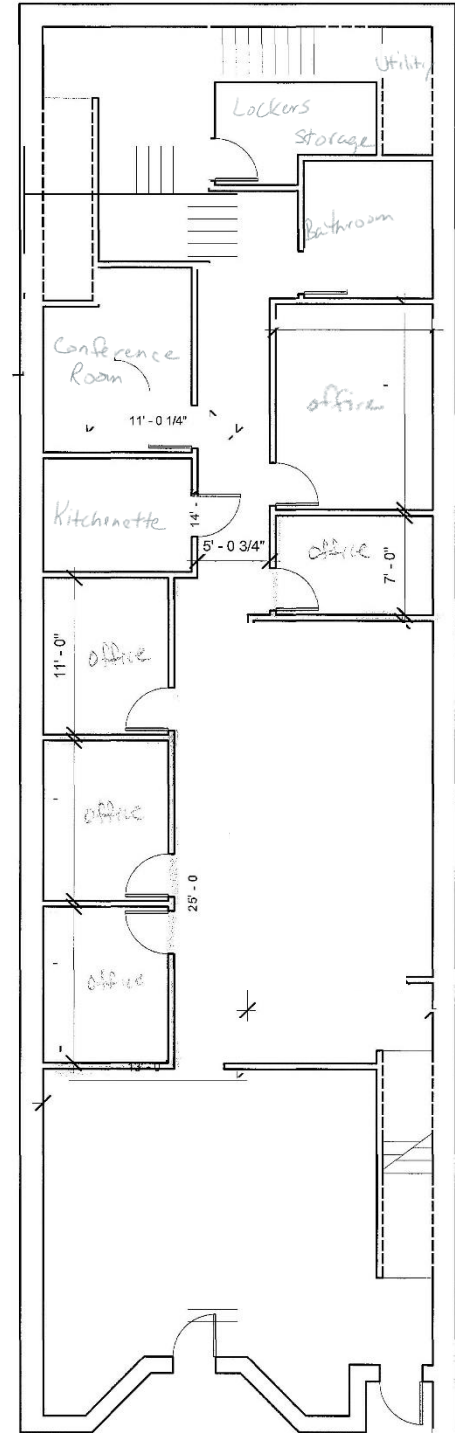
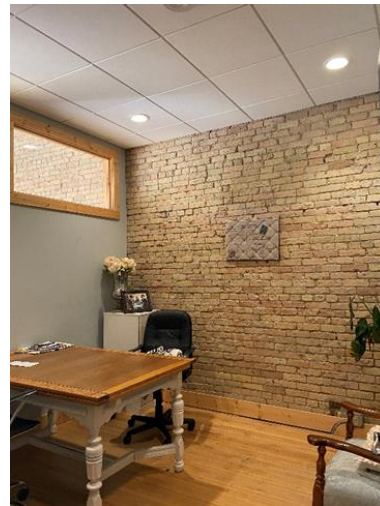
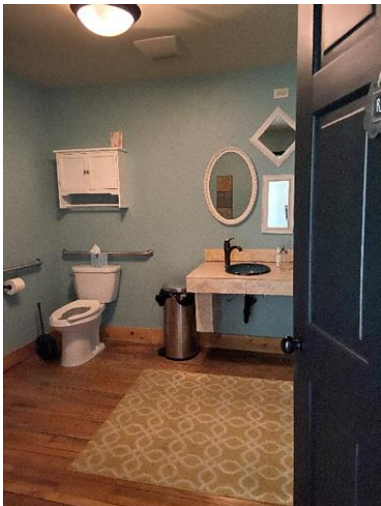
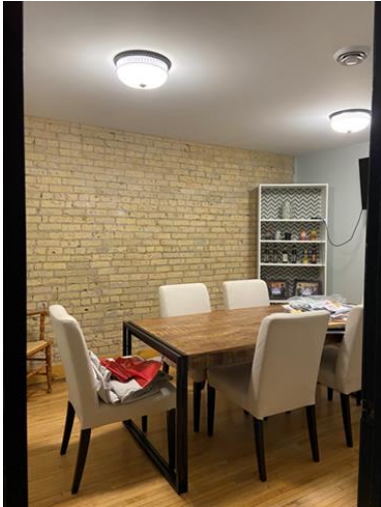
sdevine@warnert.com



713 W St Germain

St. Cloud, MN

Floor Plan and Interior Photos



For more information contact: Sheila DeVine
320.492.3230
sdevine@warnert.com



713 W St Germain

St. Cloud, MN

Photos from
Salon



Layout from former salon, some of the cabinets and plumbing are still accessible.
If interested, we will list and detail individual pieces and current floor plan to be able to work on a new layout plan for a salon.

For more information contact:

Sheila DeVine
320.492.3230
sdevine@warnert.com

